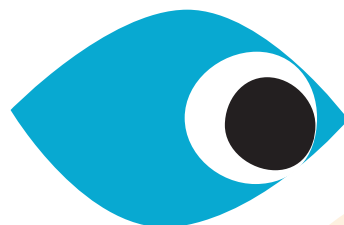


# How can you be more Deaf aware?



Make sure you have the **person's attention** before you start speaking



Maintain **eye contact**



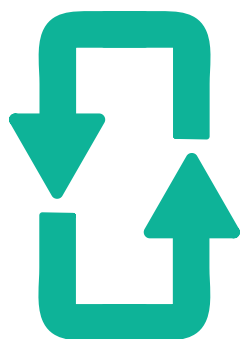
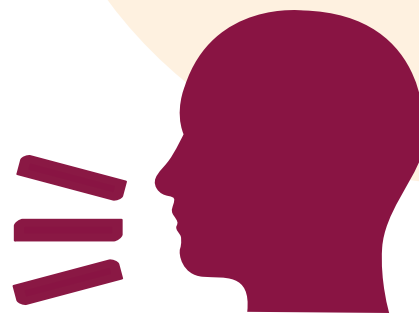
**Don't shout.**

It's uncomfortable for hearing aid users and appears aggressive

Avoid environments with excess noise / Choose somewhere with **good lighting**



**Speak clearly**, not too slow or too fast. Don't cover your mouth



**Don't keep repeating** the same word, explain what your trying to say differently